

AMF-BRUNS

LEG INSTALLATION INSTRUCTIONS

Single SeatLegs



Single Wheelarch Frame



Double Wheelarch Frame



SmartLegs With Wheelie Wheels



SmartLegs



Fixed Legs

WARNING

Carefully read, understand and follow all warnings and instructions provided in this manual, and keep it in a safe place for future reference.

If you have any doubt whatsoever regarding the use or maintenance of any AMF-BRUNS product, please contact AMF-BRUNS.

Failure to follow these warnings and instructions can result in product malfunction or loss of control of the vehicle, causing an accident, severe personal injury or death. **This guide contains current information at the time of printing. AMF-Bruns reserves the right to modify systems or content without notice. Please visit our website for updated versions.**



AMF-BRUNS OF AMERICA

www.amfbrunsamerica.com



Part Number TR600012 Rev 01
Last Published July 2019



AMF-Bruns of America

877-506-3770

www.amfbrunsamerica.com



SmartSeat Tip & Fold - On A Single Seatleg

INSTALLATION INSTRUCTIONS



Insert the T-bolts in the airline rail.



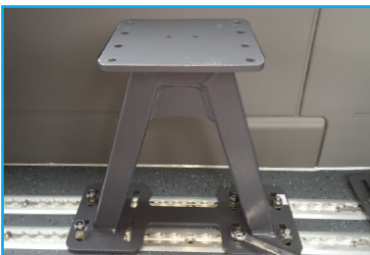
Place two T-bolts 76 mm and two single T-bolts. The single fitting comes to the front of the seatleg and the T-bolt 76 mm at the rear. Note that the arrow (with the letter F) must face the front of the vehicle.



Place a washer over the wire ends of both front T-bolts before placing the chair.



Place the single seatleg on the T-bolt threaded bolts with the second washer.



Tighten the nuts on the T-bolts.



Mount the Smartseat Easy Tip Fold on single seatleg with 4 bolts M10 x 35 quality 10.9 or higher. Tighten these bolts to 50 Nm.



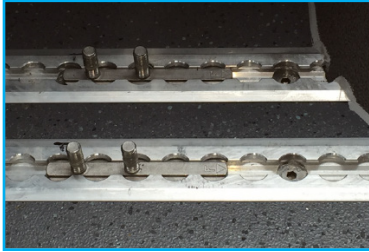


AMF-Bruns of America
877-506-3770
www.amfbrunsamerica.com

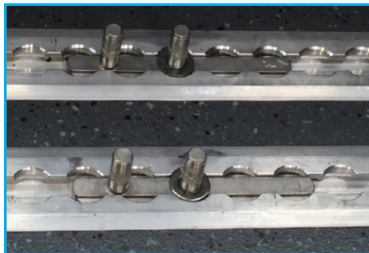


SmartSeat Tip & Fold - On A Single Wheelarch Frame

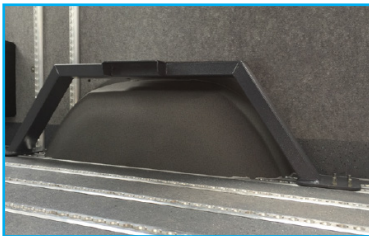
INSTALLATION INSTRUCTIONS



Place T-bolts in the rail. Two 35 mm pieces for the T-bolt in front of wheelarch and two 35 mm pieces behind the wheel case. Note that with the 35 mm T-bolt, the arrow with the letter F (front) faces the front of vehicle.



Place washer on one of the ends of both front T-bolts before the chair is placed. When the T-bolts are in the desired location, place one flat washer onto one of the threaded studs on each of the T-bolts.



Place the bracket with the seat(s) on the T-bolt thread ends.



Place the second washer, followed by the self-locking M10 nut. Tighten nut to 50 Nm.



Mount the Smartseat Easy Tip & Fold on the single wheel arch bracket with 4 bolts, M10 X 35 quality, 10.9 or higher. Tighten bolts to 50 Nm.



Check the function of the chair. Check the seat for proper operation.





AMF-Bruns of America

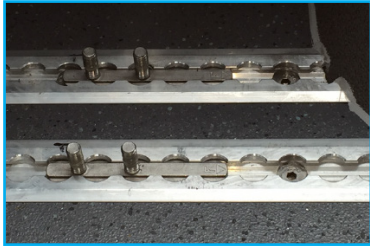
877-506-3770

www.amfbrunsamerica.com



SmartSeat Tip & Fold - On A Double Wheelarch Frame

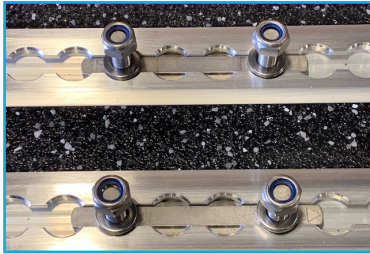
INSTALLATION INSTRUCTIONS



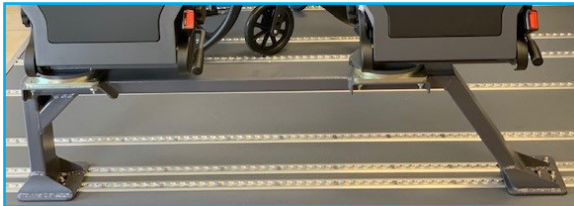
Place T-bolts in the rails onto the appropriate adjacent airline rails. Note that with the 35 mm T-bolts, the arrow with the letter F (front) always must face the front of vehicle.



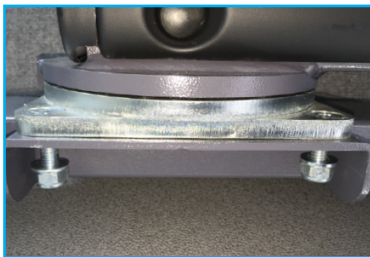
- 1st: Install two 35 mm T-bolts: one into each rail in front of the wheel arch.
- 2nd: Install two 76 mm T-bolts: one into each rail behind the wheel arch.



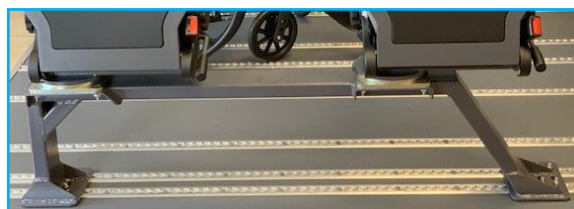
Place washer on one of the ends of both front T-bolts before the chair is placed. When the T-bolts are in the desired location, place one flat washer onto one of the threaded studs on each of the T-bolts.



Place the bracket with the seat(s) on the T-bolt thread ends. Install the wheelarch frame onto the threaded studs of the T-bolts.



Mount the Smartseat Easy Tip & Fold on the single wheel arch bracket with 4 bolts, M10 x 35 quality, 10.9 or higher. Tighten bolts to 50 Nm. Mount the Tip & Fold Smartseats onto the wheelarch frame and secure using the provided bolts, washers, and locknuts, M10 x 35, grade 10.9 or higher. Tighten bolts to 50 Nm.



Check the function of the chair. Check the seat for proper operation.





AMF-Bruns of America

877-506-3770

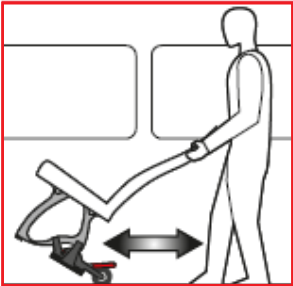
www.amfbrunsamerica.com



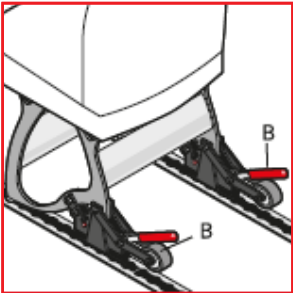
SmartLegs With Wheelie Wheels

INSTALLATION INSTRUCTIONS

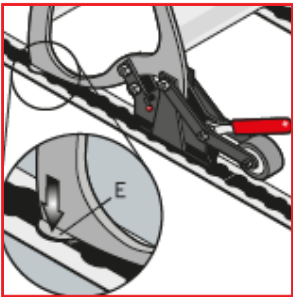
Installing A Seat



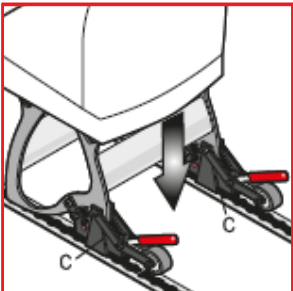
Transport seats by tilting the seats back to utilize the Wheelie Wheels.



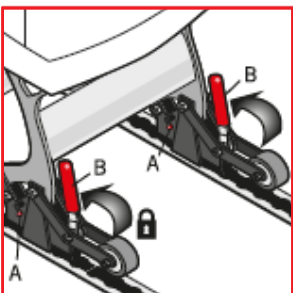
Rest on tracking and ensure handles B are unlocked by pointing away from the chair as shown next to the left. If not please unlock them using the instructions in the next section on the right.



Use the round spigot E at the front of the seat legs (if available) to insert into the floor tracking holes.

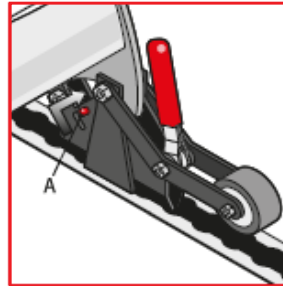


Lower the rest of the seat into the tracking. The Seat Fitting C should now sit in line with the tracking.

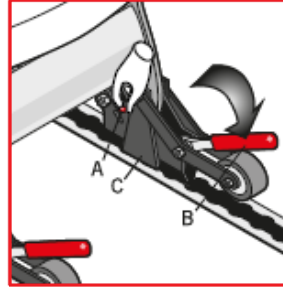


Close handles B to lock the chair in its new position. The safety bolts (A) should rest in their lower position.

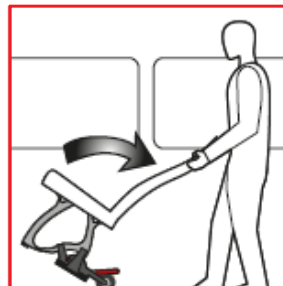
Unlocking Seat For Removal



Lift safety bolt A to its upper position.



While holding safety bolt A in its upper position pull handles B away from the Fitting C to unlock. Repeat on other leg. The seat is now unlocked and ready to be removed.



Using the wheels as a pivot point, lean the seat backwards out of the floor tracking. The seat should now be free of the tracking and can now be moved.

Note: When not in the floor tracking leave the Fitting with Wheelie Wheels in the unlocked position.

SmartLegs with Wheelie Wheels should only be operated by trained personnel.



AMF-Bruns of America

877-506-3770

www.amfbrunsamerica.com

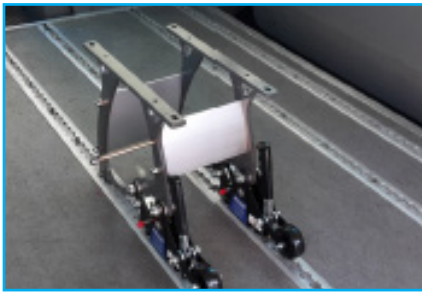


SmartSeat Easy Combined With SmartLegs

INSTALLATION INSTRUCTIONS



Place the Smartlegs Legs in the rails.



Place the Spacer plates between the Smartlegs using the threaded rod.



Mount the chair to the Smartlegs Legs using the mounting brackets and hex bolts. Quality 10.9 or higher nuts and bolts. First mount all nuts and bolts before securing them. Secure these bolts with a minimum torque of 20 Nm. There is no maximum limit to offset the seat LH or RH.



Now place all cushions.



If the Smartlegs are fitted with Wheelie Wheels, the chair can be moved without first lifting up.

Floors fitted in accordance with these instructions comply with EU directives.



AMF-Bruns of America

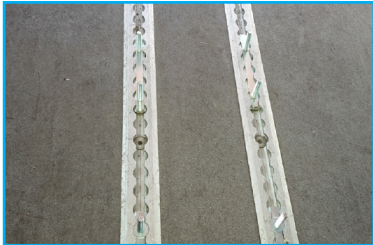
877-506-3770

www.amfbrunsamerica.com



SmartSeat Easy Combined With Fixed legs

INSTALLATION INSTRUCTIONS



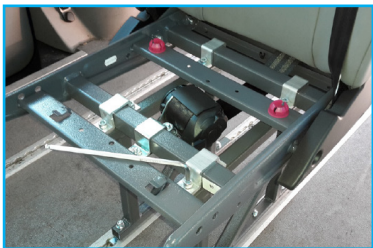
Place the M8 T-Bolts in the rail, then place the single T-Bolt at the front and the double T-Bolt 95mm at the rear.



First place an underlay ring in the airline rail over the threaded rods of the foremost T-bolts. Then place the Fixed legs on the T-bolts.



Secure the washer and the nuts to the T-bolts.



Mount the chair to the fixed legs using the mounting brackets and hex M8x45 nuts and bolts of quality 10.9 or higher. First mount all nuts and bolts before securing them. Secure these bolts with a minimum torque of 20 Nm.



Now place all cushions.